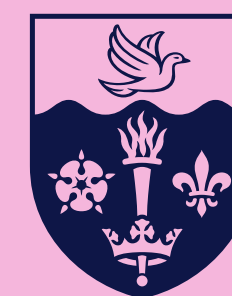


EXCHANGE PROGRAM

Looking for next? *Welcome to Hull*

Fact Sheet - Academic Year 2025-2026



UNIVERSITY
of HULL

Useful contact information

Global Experience Team

✉ Incoming-mobility@hull.ac.uk

☎ +44 (0)1482 46 5900

Oliver Bakewell: Global Experience Manager

Sarah Adams: Study Abroad Administrator (Outgoing Exchange from Hull)

Stephanie Gleeson: Study Abroad Administrator (Incoming Exchange to Hull)

Semester Dates 2025/26

Provisional Trimester 1

Induction and registration week: 15 September 2025

Teaching period: 22 September – 12 December 2025

Winter Break: 15 December – 2 January 2025

Winter exams: 5 – 16 January 2025

Provisional Trimester 2

Induction week and teaching begins: 26 January 2026

Teaching period: 26 January – 1 May 2026

Spring Break: 30 March – 10 April 2026

Summer Exams: 4 May – 22 May 2026

E-Induction

We will email you with a link to our e-Induction, which includes information to help you prepare for your arrival at the University.

Early or late arrivals

The Accommodation office will offer further information via email on early or late arrivals.

Programmes and Courses

Types of programmes

Embark on Your Global Academic Adventure at the University of Hull

Dreaming of studying abroad? Your opportunity awaits at Hull, where you can immerse yourself in a semester or a full academic year of enriching experiences through our diverse programs tailored just for you!

Exchange Program: Take your education to new heights by studying at the University of Hull through our exchange agreements with universities worldwide. Whether it's for a semester or a full year, unlock the door to a world of possibilities and broaden your academic horizons. No tuition fees will apply.

Study Abroad: Don't have an exchange agreement with us? No worries! With our Study Abroad programs, you can still make your international academic dreams a reality. Dive into a single trimester or indulge in two trimesters of discovery, exploration, and personal growth at the University of Hull. Tuition fees apply on a pro-rata basis.

At Hull, we believe that education knows no bounds. Join us and grab the chance to expand your worldview, make lifelong connections, and create unforgettable memories. Your academic journey starts here – at the University of Hull.

Apply now and let your adventure begin.

Hull is like nowhere else

Like discovering a juicy secret. Yes, we've got big ticket attractions. But it's the quirks, the culture, the hidden gems around every corner – they're the reason students fall in love with our city.

Free museums, eclectic galleries, new bars, historic pubs, famous nightclubs, heart-racing sport, hair-raising shows, foodie haunts, indie shops, bohemian cafés and more. A beautiful spot for a peaceful stroll, The Marina is also buzzing with life. Just a skipping stone's throw away you'll find the independent cafés, bars, restaurants, shops and art galleries of the Fruit Market. [Take a look around...](#)

Hull Fair

The sights, the smells, the lights, the food... For one week in October, one of Europe's biggest travelling funfairs comes to Hull. You do not want to miss it.

Dive in at [The Deep](#)

Who wouldn't want to see baby penguins? One of the UK's biggest and best aquarium is also home to sharks, sawfish and over 3,000 other sea creatures. Plus, your ticket includes free returns for 12 months, so you can go as many times as you like.

We're the UK's most affordable city - fact.

With one of the lowest rents in England, one of the cheapest pints in the country and all the perks that come with living in one of the UK's most cultural cities, your money will go miles further.



Step into Hull

A hundred years in the making, our University couldn't have happened anywhere else. A University of its city. Unbreakable. Irrepressible. Free.

This proud port has launched generations of freethinkers and changemakers to the world. Take famous abolitionist and Hull MP William Wilberforce. Or headscarf revolutionary Lilian Biloca. Or poet Philip Larkin, who was Head Librarian here for 30 years.

Today's Hull is still a haven for unconventionally brilliant minds. Maybe there's something in the water here? Well, this is your chance to find out.

Don't just take our word for it, we have been officially voted one of the coolest postcodes in the UK by [The Times newspaper](#)!

All roads lead to Hull

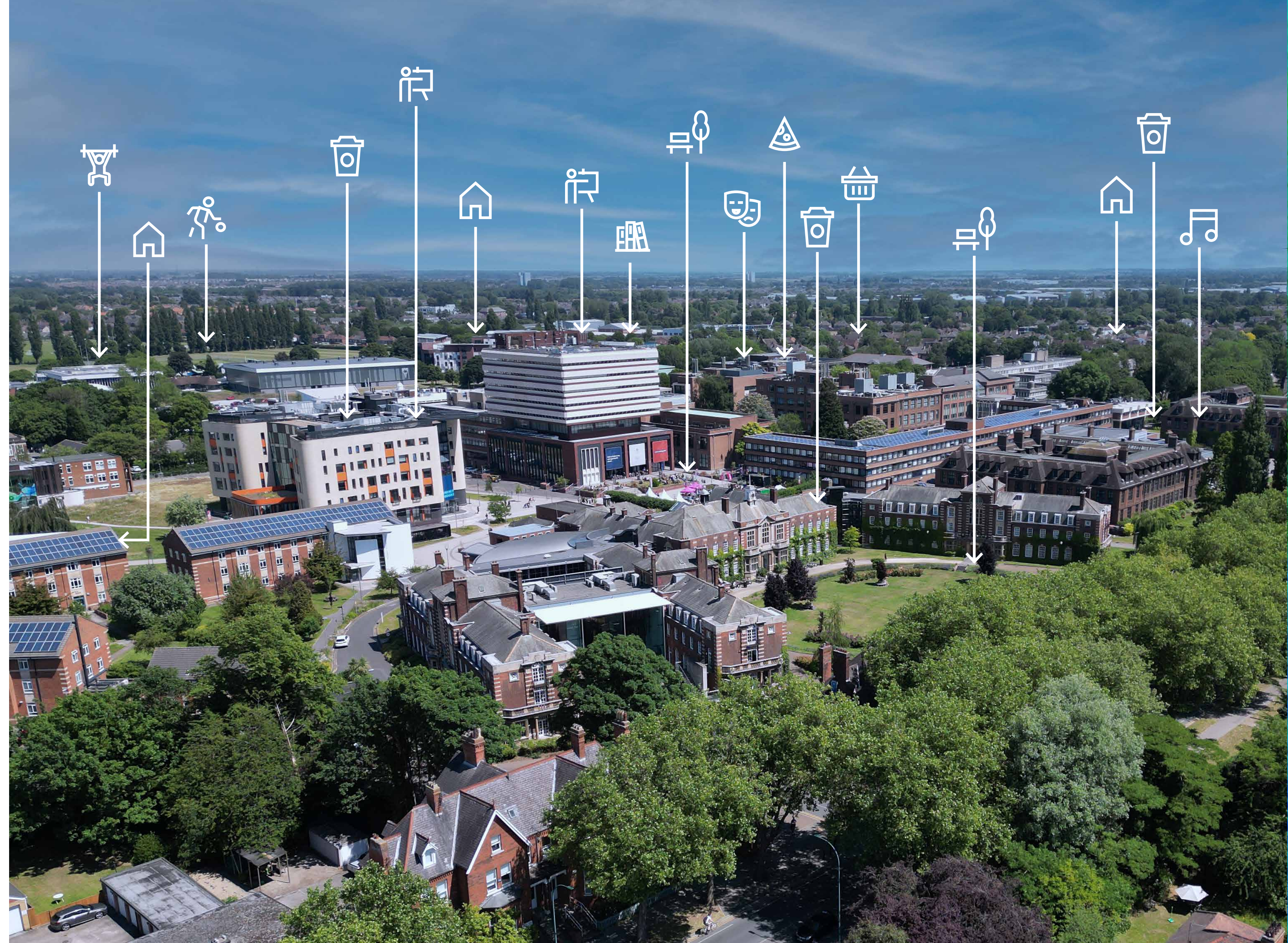
Hull is, obviously, amazing but if you've got a bit of wanderlust you're in the right place to start your next adventure. Hop on board a Hull Train to London for just over a tenner when combined with a railcard. Sail to Bruges with P&O Ferries from £50. Or if you just fancy a bit of seaside action, hop on board an EYMS bus to Scarborough and back for less than a fiver. You won't even get charged excess baggage for your bucket and spade.



One campus, one community

Our leafy, single-site campus has everything you could ever need, you'll have access to our brand-new gym and sports centre on your doorstep. Plus bars, coffee shops, a 7-storey library, a mini-supermarket and a nightclub.

And then there's the views. Rose-filled lawns, 1,000+ trees, ivy-clad red-brick buildings ... and an adorable squirrel population. This is one of the oldest universities in the country, after all. So, let's recap: all you need, all your mates, all on one beautiful campus. Choose Hull and live your best student life.



Student Life

Here, you're a name, not a number

When you join Hull, you're a valued member of a tight-knit community where the lecturers know your name. This is a place where everyone matters. A place for all ages, all backgrounds, all walks of life. It's no coincidence that 'friendly' is the word most of our students use to describe Hull. So whoever you are, there'll be like-minded people here. You just have to find them. And that starts now.

Did you know that...

Hull University is rated Gold in the [Teaching Excellence Framework \(TEF\)](#)? TEF describes its Gold rating as 'The student experience and student outcomes are typically outstanding'

We've used feedback from our students to drive transformation of our approach to teaching. To enhance our academic and pastoral support. And to empower them to achieve their own personal and professional success.

We have incredible sports facilities?

At the University of Hull, we cater to everyone, from casual sport enthusiasts to those aspiring to represent their country on a grand stage. Our nationally award-winning programme, Campus Sport offers a relaxed and enjoyable environment for friendly competition, 7 days a week of turn up and play sport sessions all throughout the year. You can also get involved in our University Sport Leagues or take on the challenge of BUCS representing the University of Hull in over 40 different sports. We're dedicated to supporting your growth, with opportunities for workforce development and your performance if you are gifted and talented to join our Talented Athlete programme.

Start your exciting sports journey with us at the University of Hull today. Please visit our [website online](#) to view our incredible sports and wellbeing facility which is available right here on campus!

We offer 24-hour student support?

We won't meddle, we won't pry, we won't preach. [But we will do everything we can to help.](#) Before you arrive, while you're here, and even after you've left.

You are automatically a member of our Student Union?

You have access to 'HUSU's' all services and benefits to ensure you have all you need during your time at university - from social spaces, opportunities and fun, to advice and representation.

Our research is award winning?

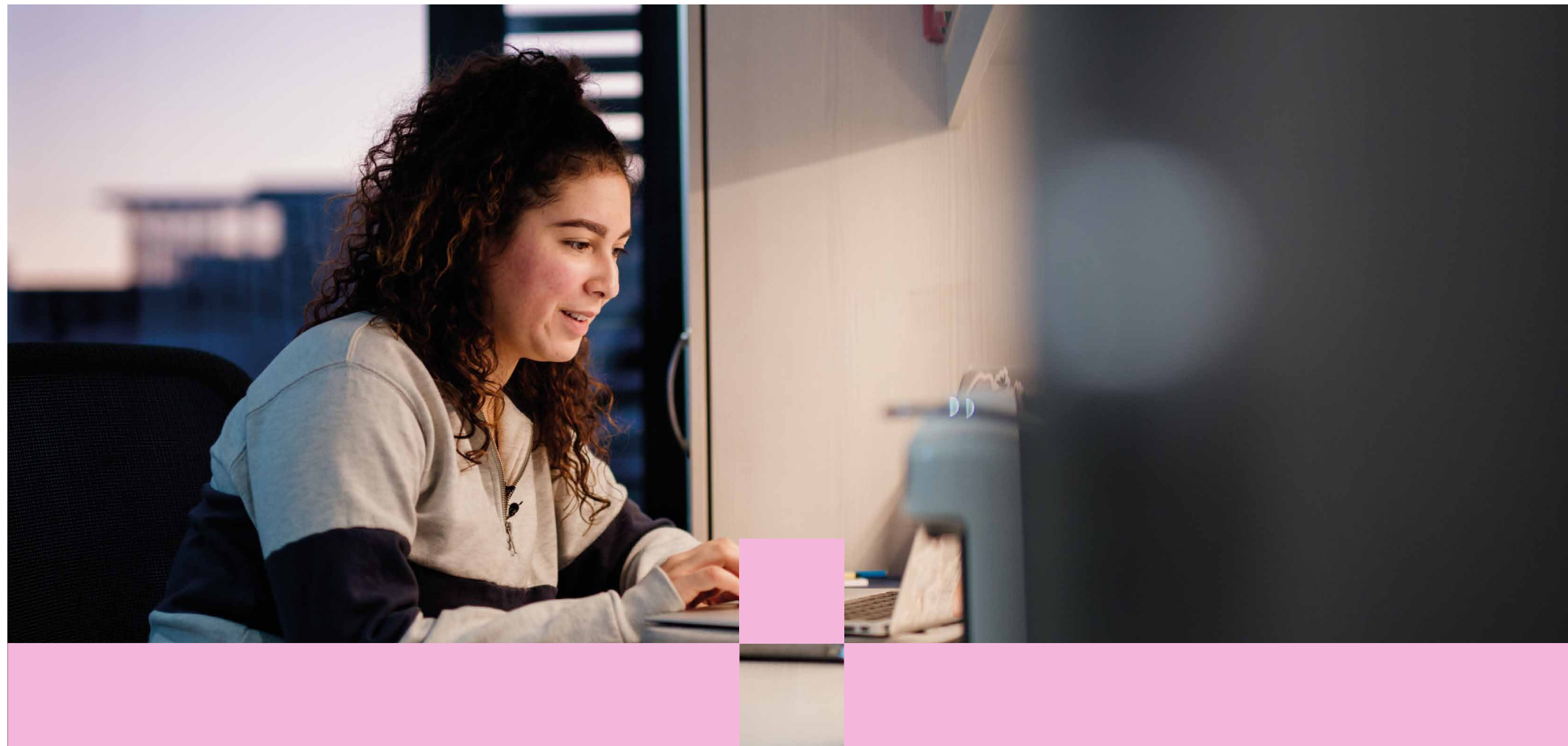
Motivated by society's challenges, and inspired by the power of our global community, we're shaping a fairer, brighter and carbon neutral future. Our research makes a real difference to all our lives, and tackles some of the planet's greatest threats head on.

[Find out more](#)



At Home in Hull

Experience More....More life..More time..More facilities..
More friends..More options..More fun



Guaranteed accommodation

All new exchange students coming for trimester 1 are guaranteed a single-person room within our university owned, managed or directed accommodation if you sign up by 31st July, in your year of entry. If applying for trimester 2, the guarantee date will be 1st November.

Benefits to living on campus

- Guaranteed accommodation for all exchange students
- Free Wi-Fi
- Hassle free booking
- Convenient payment instalments
- Safe as houses, 24-hour reception and campus security
- Fantastic facilities
- All bills included
- Location, location, location

Guaranteed accommodation

All new exchange students coming for trimester 1 are guaranteed a single-person room within our university owned, managed or directed accommodation if you sign up by 31st July, in your year of entry. If applying for trimester 2, the guarantee date will be 1st November.

From your room to your lectures in under 10 minutes

Whichever room you choose, you'll be at the heart of university life. This means you're never far away from

- Teaching rooms
- Labs
- Our exceptional library
- Sports facilities
- Student union
- Food Outlets

At Home in Hull



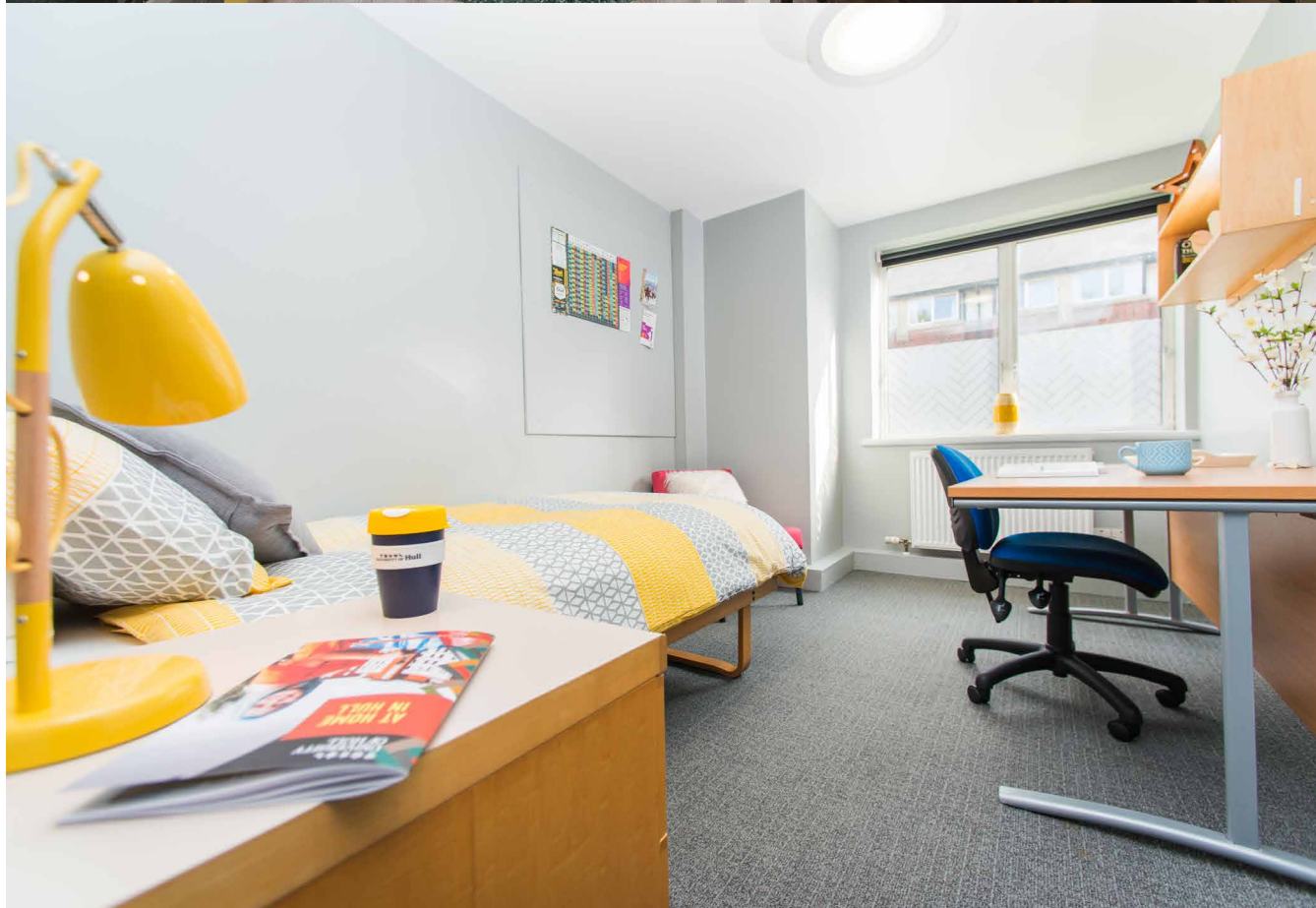
Westfield Court

Westfield Court standard ensuite room, with private shower room, offered at **£184pw**, all bills and Wi-Fi included. Shared kitchen with up to 9 other students.



Taylor Court

Taylor Court standard ensuite room, with private shower room, offered at **£173pw**, all bills and Wi-Fi included. Shared kitchen with up to 7 other students.



Programmes and Courses

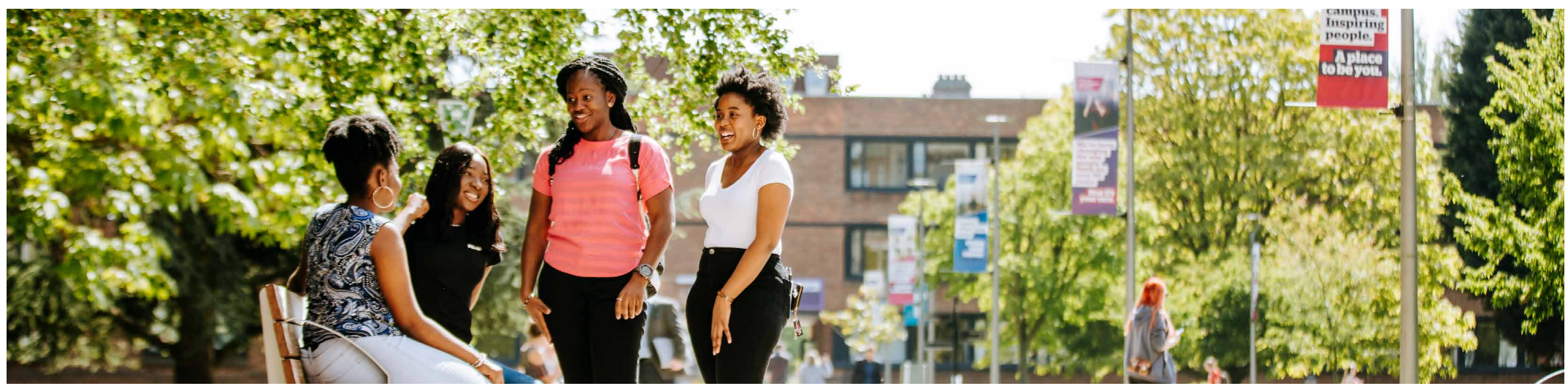
Courses

Explore Your Future Courses: get ahead with our Module Handbook!

Curious about what lies ahead in your academic journey? Dive into last year's module handbook to catch a glimpse of the exciting courses awaiting you for the 2025-2026 academic year! These are currently being updated

Module Handbook 2025-2026: Find out more about choosing your modules [here](#) to access a treasure trove of module information from the previous year. Get a head start on planning your upcoming semesters and discover the wide array of courses available to you.

Stay Tuned for Updates: Keep in mind that subject offerings can change based on various factors such as timetabling, prerequisites, and capacity. But don't worry! We regularly update our subject information, typically between April and May each year, to ensure you have the latest details at your fingertips.



Modules and Credits

At the University of Hull, we empower you to shape your academic experience by selecting the courses that ignite your passion and fuel your ambitions!

Here's what you need to know:

Subject Selection: You'll dive into three modules per semester, but we encourage you to pick additional modules as backups in case some of your top choices aren't available. This ensures you have a diverse array of options to explore and guarantees a rich academic experience. Subject choices must be approved by your home university.

Credit System: Most modules earn you 20 credits each, allowing you to take up to 60 credits per semester. With this flexibility, you can adjust your workload to suit your learning style and interests, maximising your potential for growth and success.

Total Credits: Whether you're joining us for one semester or a full academic year, we've got you covered. Aim for 60 credits per semester (equivalent to 30 ECTS credits) for a single semester or 120 credits (equivalent to 60 ECTS credits) for a full year of immersive learning and personal development.

Your future is in your hands – grab the opportunity, choose your modules, and unleash your potential at the University of Hull.

Programmes and Courses

Subject Exceptions

Important Considerations for Subject Selection!

Here are some crucial points to keep in mind:

Social Work and Youth and Community Development Modules: Certain modules in these fields may be unavailable due to mandatory DBS checks (this is a police background check for working with vulnerable individuals or children) and other governmental constraints. While we strive to offer a diverse range of modules, these constraints may limit availability in some cases.

Medicine Programs: Unfortunately, we do not offer exchange opportunities for our Medicine programs due to placement restrictions which are core to the programme. We appreciate your understanding regarding this matter.

Module Approval Considerations: Please note that it may not always be possible to approve your module learning agreements in advance. If you require comparable modules, it's imperative to indicate this in your application. Keep in mind the constraints for module choices, including module availability, prerequisites, timetable clashes, and space availability.

Your academic journey is unique, and we're here to support you every step of the way. If you have any questions regarding modules please email us at **Incoming-mobility@hull.ac.uk**

Entry Requirements

Academic Entry Requirements: To join our vibrant community, you must be a current student in good academic standing at your university and have completed at least one year of your course. Each application is assessed individually for your unique circumstances

English Language Requirements for Exchange Students: As all classes are conducted in English, proficiency in the language is essential for success in your studies. You should be capable of understanding lectures, writing reports, delivering presentations, and completing exams with confidence.

English Language Requirements for Exchange Students:

- **One-Trimester Exchange:** If you're embarking on a one-trimester exchange, you'll need to demonstrate English proficiency at a minimum level of B2. Provide a letter from your study abroad/exchange coordinator or an academic staff member from your home university confirming your proficiency level, along with any relevant certifications. Upon entry, you'll be required to hold a Standard Visitor Visa. Please check your visa requirements, where a visa is required you will need to evidence your English Language Proficiency (ELP).
- **Full Academic Year Exchange:** For a full academic year exchange, evidence of your English Language Proficiency (ELP) is required. You can fulfil this requirement by presenting one of the accepted English language proficiency tests. [Here is a list of the tests](#). Before entering the UK, you must apply for a student visa and provide sufficient proof of ELP, an up-to-date passport. Once verified, you'll be allocated a Confirmation of Acceptance for Studies (CAS).

Programmes and Courses

Credit Conversions

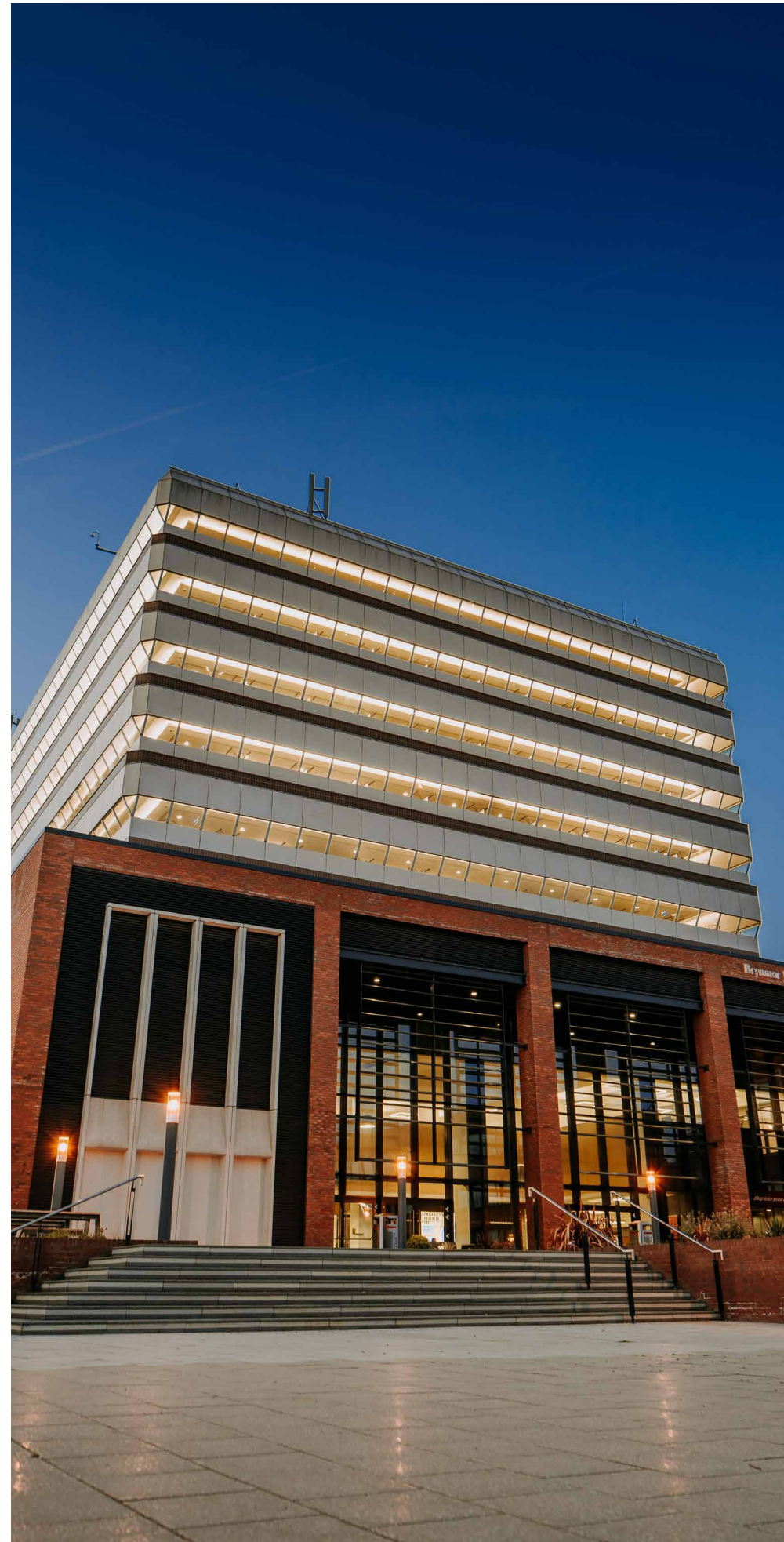
Understanding Credit Transfers: Credit transfer policies vary between universities and countries. It’s crucial to check with your home university to understand how they will transfer the marks you earn during your time at Hull. This ensures transparency and clarity as you navigate your academic path.

European Credit Transfer System (ECTS) Grade Conversions

ECTS Grade	Hull Degree Class	Equivalent Hull Mark	Definition
A	1st (First)	70–100	Excellent: Outstanding performance with only minor errors
B	2:1 (Two One)	60–69	Very Good: Above the average standard but with some errors
C	2:2 (Two Two)	50–59	Good: Generally sound work with a number of notable errors
D	3rd (Third)	40–49	Satisfactory: Fair but with significant shortcomings
E	Compensable	35–39	Sufficient: Performance meets with minimum criteria
FX	Fail	Fail: Some more work required before the credit can be awarded	
F	Fail	Fail: Considerable further work is required	



Nomination and application process



Decide if you want to study at Hull for a year or a semester

You can study either for a Full Academic Year, or a single trimester. Check with your home university about how long you can study with us.

Get a formal nomination from your University or register your interest with us

If your University has an agreement with the University of Hull, you will need to ask your University to formally nominate you to us.

If your home University does not have a formal agreement with The University of Hull, email your expression of interest to come and study at Hull as a fee-paying student to Incoming-mobility@hull.ac.uk. Please give details of your home university, subjects studied, level of study and how long you would like to spend at the University of Hull.

Nomination Deadlines

The nomination deadline for study at the University during 2025/26 is:

Fall (1 March - 30 April 2025)

Spring (1 August - 30 September 2025)

On the day that nominations open, The Global Experience Team will email a nomination form link to partners with instructions on how to nominate students to the University of Hull.

Application Deadlines

The application is online (students will receive an email link to apply when the application opens along with other important information)

Fall (1 April - 31 May)

Spring (1 September - 31 October 2025)

We are sorry but **we are not able to accept late applications**. The online application process will not be reopened.

Nomination and application process

The Application Process

Your Step-by-Step Application Guide!

Excited to start your academic adventure at the University of Hull? We've streamlined the application process to make it as straightforward as possible.

Here's what you need to do before stepping foot on our campus:



Step 1: Prepare Your Application:

Once your nomination or expression of interest has been received, we will email you a link to an online application form once the application window has opened with further information about studying at the University of Hull.

You will need the following documents for your online application which you will need to upload:

- A copy of the formal nomination from your home University, if you do not have this it is not essential. However, all other documents **MUST** be uploaded.
- A photocopy of your passport.
- A transcript of your results from your university studies achieved so far. Please provide a separate list of all the courses you have taken in the past indicating the grades you have achieved.
- A letter of English language proficiency for single-trimester applicants only from an academic member of staff at your university. The letter should describe how the member of staff knows you, why you are suitable for the course and confirm you are in good academic standing.

Evidence you meet the English language requirements. [Click here for acceptable proof.](#)



Step 2: Submit Your Application:

Complete the online application form, and submit it to your University, ensure all details are accurate and up to date.

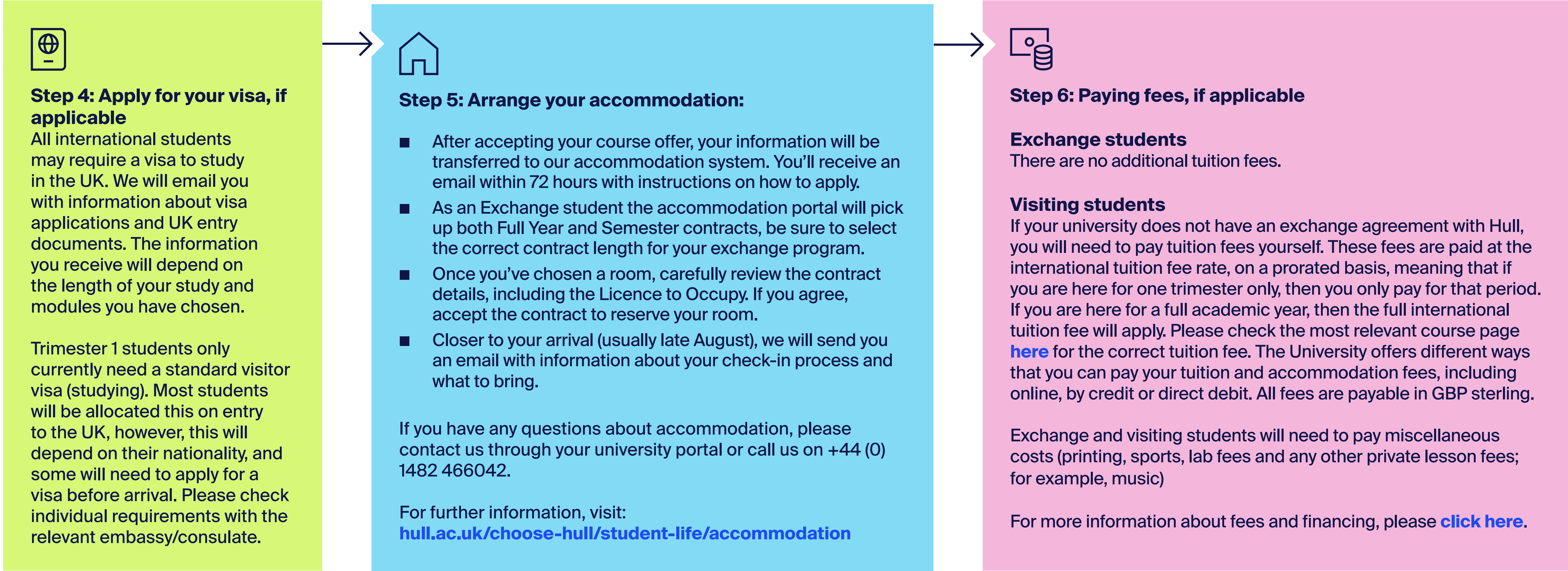
Please contact our admissions team if you have any questions or need assistance along the way.



Step 3: Await Confirmation:

After submitting your application, keep an eye on your inbox for updates from our admissions team. We'll notify you of the status

Nomination and application process



Campus map

- Car Park
- Accessible Parking
- Electric Car Charging Points
- Accommodation
- Food and drink outlets
- Vehicular Entrance



Accommodation Office	17
Allam Medical Building	26
Allam Sport Centre	3
Applied Science	8
Brynmor Jones Library	27
Calder	31
Canham Turner	14
Chemistry	28
Cohen	44
The Courtyard	6
Derwent	41
Don	20
Enterprise Centre	34
Esk	46
Ferens	37
Gulbenkian Centre	15
Hardy	23
Larkin	38
Loxley	19
Media Hub	39
Middleton Hall	43
Nidd	46
Robert Blackburn	21
Sport Science Laboratory	4
Student Central	16
Taylor Court	30
Venn	42
Westfield Court	18
Wharfe	41
Wilberforce	29

Discover more about the University of Hull

Interested to know more about inbound exchanges?

[Inbound Exchanges and Visiting Students.](#)
[University of Hull.](#)

Curious to know more about our campus?

Explore it via our [Virtual Campus Experience](#).

Focused on accommodation?

Discover our on-campus [accommodation options](#).

Want to start preparing your documents?

Research our [English Language Requirements](#) and learn more about [the documents you will need](#) to prepare.



We look forward to welcoming you to Hull.

Get a first impression of our exciting city in this video.



Every effort has been made to ensure the information is correct at the time of publication, however the content of this brochure may be subject to changes. Publication date: February 2025.