



Foto: Rüdiger Nienzow

Fact Sheet for Exchange Students wishing to attend the University of Wuppertal

INTERNATIONAL CENTER
Abt. International Office



BERGISCHE
UNIVERSITÄT
WUPPERTAL

BERGISCHE UNIVERSITÄT WUPPERTAL / THE UNIVERSITY OF WUPPERTAL

Wuppertal, one of the 20 best places to visit

„Wuppertal is one of the greenest cities of Germany and has an extraordinary ace up its sleeve - one of the world's coolest rail systems. The city's 120-year-old Schwebebahn (suspension railway) looks like something from the imagination of Jules Verne“

[CNN Travel](#)

Bergische Universität Wuppertal, founded in 1972, is one of the state universities in North Rhine-Westphalia (NRW), which is economically the most significant German state with an outstanding educational and cultural landscape. The city of Wuppertal, the seventh largest city in NRW and world-famous for its suspension railway, is a university city with a population of around 354.000. It is situated close to Düsseldorf and Cologne in a particularly delightful region with wooded hills, meadows, orchards and fields, called the “Bergisches Land”, and is an interesting mixture of outgoing metropolis and cosy village with a lot of leisure facilities. From any part of the city it is only a 10 minute walk to the nearest park or shady woodland path. Due to the excellent train and transport network, you can travel within one hour from Wuppertal to Cologne, Bonn, Dortmund, Düsseldorf and many other cities.

Altogether, Wuppertal is a great place for recreation and relaxation. If you like hiking and enjoying nature, but also want the city-life experience, you'll find ideal conditions for studying here.

[NRW Tourism](#)

[Wuppertal tourism and city information](#)

[Stadthalle Wuppertal](#)

[Travel in Germany](#)

[North Rhine-Westphalia](#)

[Film about the “Bergisches Land”](#)

[Short film about the city triangle Wuppertal/Remscheid/Solingen](#)

The University of Wuppertal towers over the city. The main campus enjoys a panoramic view across the town – a perfect environment for developing inspiring ideas and academic projects that will shape the future. Some 23.000 students from more than 100 countries benefit from our high-level academic approaches in teaching, and the university's commitment to research and international collaboration. The University of Wuppertal offers a diverse range of programs in science, engineering economics and the humanities, as well as educational science, design and architecture. Our academic culture is marked by diversity, experience and innovation.



Foto: Bergische Universität Wuppertal

DEADLINES

Study abroad nomination periods	
For summer semester 2025	1 November 2024 - 15 January 2025
For winter semester 2025/26	15 March 2025 - 15 June 2025
Study abroad application deadlines	
For summer semester	31 January 2025
For winter semester	15 July 2025
Application documents	
After you have been nominated by your home university, you will receive application and information documents by our Office for Student Admission and Registration for International Students („Internationales Studierendensekretariat“).	

LECTURE TIMES

Semester periods	Teaching begins	Teaching ends
Summer semester 2025 (1 April 2025 – 30 September 2025)	7 April 2025	18 July 2025
Winter semester 2025/26 (1 October 2025 – 31 March 2026)	13 October 2025	6 February 2026
At the beginning of each semester, we will provide you with information on the most important issues, such as enrollment, registration with the local authorities, and opening a bank account at our Welcome Days for international Exchange Students. Getting to know fellow international and German students during recreational activities is another benefit of the Welcome Days.		



Foto: Rüdiger Nehmzow

COURSE PROGRAMME

Course programme

For information on courses, times and other events see:

[StudiLöwe](#) (“**Studienangebot**“ > “**Vorlesungsverzeichnis anzeigen**“)

You can view the course programme without entering user name and password

Searching for courses taught in English:

[StudiLöwe](#) (“**Studienangebot**“ > “**Erweiterte Suche**“ > “**Lehrsprache**“ = choose “**englisch**“)

A collection of English-taught courses offered by the faculties can be found [here](#).

Institutional grading system

1 credit (LP) equals 30 hours of work. A regular semester consists of 30 credits with 15 weeks of teaching in winter and 14 weeks in summer.

The institutional grading system is as follows:

Grading scale of Examinations

Grade 1 "Sehr gut"(very good) = excellent performance

Grade 2 "Gut" (good) = performance well above average

Grade 3 "Befriedigend" (satisfactory) = average performance

Grade 4 "Ausreichend" (sufficient) = performance meets the standards in spite of deficiencies

Grade 5 "Ungenügend" (fail) = performance does not meet the standards because of substantial deficiencies

For the purpose of a more differentiated assessment, the above grades may be raised or lowered by 0.3; the grades 0.7 and 5.3 are not possible.

Studies are organized into modules. A module consists of one or several thematically linked and synchronized courses and may consist of several forms of teaching (for example, lectures, exercises, practicum, project report) and learning (for example, independent and private study, distance education program, term paper).

If a module consists of several module examination components, the module grade will be calculated as the weighted average of the individual components. The average grades will have only one decimal place, all further decimal places will be disregarded without rounding.



Foto: Ralf Baumgarten

GERMAN LANGUAGE COURSES

German Language Courses

Even though the university does not require exchange students to provide formal proof of sufficient language skills, we recommend sufficient proficiency of the German language, since most lectures are held in German.

The tuition fee for course No. 1 (**Intensive German Course**) is 300 EUR per semester. A placement test at the beginning of the courses will determine the course level to which you will be assigned.

For course No. 2 - 8 (**Degree program parallel courses, German for special purposes**), only contribution for material 10 - 20 EUR per semester is charged. Register [here](#).

Contact:
Sprachlehrinstitut (SLI)

Email: brittali@uni-wuppertal.de

[Website Sprachlehrinstitut](#)

	Title	Level	Time & Load	Credit Points (CP)
1	Intensive German Course including additional courses	A2 (beginners) to C1 (advanced)	Weekdays daily 8:15 – 11:45 (13:30)	10 CPs per level
2	German for Business and Economics	advanced (with DSH2)	2 hours per week, Three courses are offered alternatively each semester	2-4 CPs With presentation and academic paper (4 CPs)
3	German for Humanities and Social Sciences	advanced (with DSH2)		
4	German for Science and Technology	advanced (with DSH2)		
5	German for Political Science and History	advanced (with DSH2)		
6	German C2a Job-related Language	advanced (with DSH2)	4 hours per week	2-4 CPs
7	Academic German Course C2b, German as a language of science	advanced (with DSH2)		
8	German for international guests of the university (Evening course) More details and registration can be found here .	Levels: A1, A2, B1 (the levels offered may vary from semester to semester)	Courses offered twice a week in the evening (18:00 to 21:00) with a total of 100 hours per term.	No CPs, but successful participation is documented by language certificates.



Foto: Rüdiger Nehmzow

ACCOMMODATION

Accommodation

The University of Wuppertal holds a limited number of:

- single apartments (around 19 m²) where you have exclusive use of a kitchen and bathroom
- single study bedrooms in double-apartments (around 38 m²) with shared kitchen and bathroom facilities

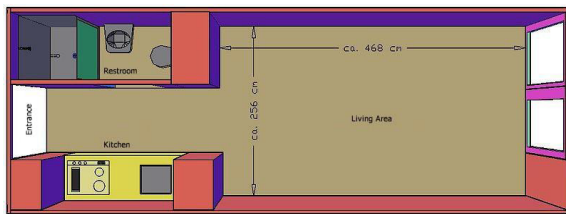
for Exchange Students in the student dormitory “*Neue Burse*” of the [Hochschul-Sozialwerk Wuppertal](#) (HSW):

The student dormitories are situated right next to the university campus with a 3-minute-walk to the university.

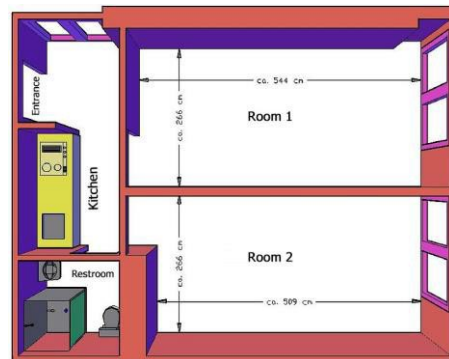
Applications have to be submitted online. You will receive a link and further information, once your nomination has been processed. The monthly rent is **342,00 EUR** including TV connection (IP-TV) and fibre-optic internet access. (You have to bring your own LAN cable or router. The rent deposit is currently around **400,00 EUR**.

If bed linen is required, it can be rented for a one-time fee of **35,00 EUR per semester**.

Example single apartment



Example double-apartment



Offers from the private housing market can be found, for instance, on the following websites:

- [Hochschul-Sozialwerk Wuppertal](#)
- [WG-Gesucht](#)



Foto: Jörg Lange / Tomas Riehle / HSW Wuppertal

ADDITIONAL INFORMATION

Additional Information	
University homepage	Bergische Universität Wuppertal
Semester ticket	Students of the University of Wuppertal pay a semester contribution of approx. 300.00 EUR per semester. The semester fee is <u>not a tuition fee</u> . It includes the "semester ticket" for free use of public transport throughout Germany as well as the student union and social contribution.
All about studying in Germany	Study in Germany
University sports programme	Hochschulsport Uni Wuppertal To use University Sports facilities please buy a FitnessCard (15 EUR).
<p>Bullying, Discrimination & Harassment</p> <p>The University of Wuppertal is committed to non-discrimination in campus life and the prevention of harassment and bullying for all staff and students, and to providing effective reporting mechanisms.</p> <p>These are backed up by appropriate support for any staff and students who are affected by harassment and bullying incidents. We believe that within hierarchical structures discrimination can never be completely prevented, but that its occurrence can be critically reflected on.</p>	<p>How we will support you</p> <p>If you are a student or staff member who has been affected by bullying, discrimination, harassment or sexual misconduct there are a number of support options available at the University of Wuppertal:</p> <p>Central Complaints Office ("Zentrale Beschwerdestelle für Studierende") Central contact point for student submissions relating to the quality of the teaching and study conditions which cannot be handled within the department concerned or by the decentralised school quality commissions. The Central Complaints Offices is omitted to independence, confidentiality, neutrality and respect for the persons concerned: https://www.qsl.uni-wuppertal.de/en/central-complaints-office/ Phone: +49 (0)202 439 2917 E-Mail: jung@uni-wuppertal.de</p> <p>Equal Opportunities Office („Büro der Gleichstellungsbeauftragten“) Advice and supports for university members in all matters relevant to gender equality https://www.uni-wuppertal.de/en/universitaet/organisation/stabsstellen-beauftragte/equal-opportunities-family-diversity E-mail: gleichstellungsbeauftragte@uni-wuppertal.de Phone: +49 (0)202 439 5369</p> <p>Anti-Discrimination Office ("Antidiskriminierungsstelle") Advice and supports for university members in all matters relevant to discrimination issues https://antidiskriminierung.uni-wuppertal.de/de/ Email: antidiskriminierung@uni-wuppertal.de Phone: +49 (0)202 439 2902</p> <p>In addition, the Students' Union (AStA) maintains a Discrimination Reporter, through which students can report experiences of discrimination at the university. These reports can be made anonymously or by mentioning one's own name. In any case, they are treated discreetly: https://www.asta-wuppertal.de/diskriminierungsmelder/</p>
Studying with Special needs	The University of Wuppertal wants to give students with a disability and chronic illness the opportunity to participate equally and independently in their studies and student life. University Disability Resource Center ("Beratungsstelle zur Inklusion bei Behinderung oder chronischer Erkrankung") https://www.inklusion.uni-wuppertal.de/de/ E-mail inklusion@uni-wuppertal.de Phone +49 (0)202 439 2607

CONTACT

Contact	
Administrative coordinator of student admission and registration for international exchange students Visiting address	Email: incoming@uni-wuppertal.de Internationales Studierendensekretariat / Student admission and registration for international students Gaußstr. 20, 42119 Wuppertal, Germany Student Service Center (SSC), Main Building G, Floor 08, Room 16 Consultation hours: Tue 09.00 am – 12.00 pm Map of the University Ground
Postal address	Bergische Universität Wuppertal Internationales Studierendensekretariat (Student admission and registration for international students) Gaußstr. 20, 42119 Wuppertal, Germany
International Students Team (I.S.T.)	Homepage International Students Team Email: mail@international-students-wuppertal.de



Foto: S. Jarych