



# GUIDE OF ACCESS

TO DOCTORAL PROGRAMMES

 **eSDUVa**  
Escuela de Doctorado **Universidad de Valladolid**

**Welcome to EsDUVa!**





## Doctoral Studies

A doctorate is the highest academic qualification that a university can award and is geared towards the student's advanced training in research techniques.



## Doctoral Programmes

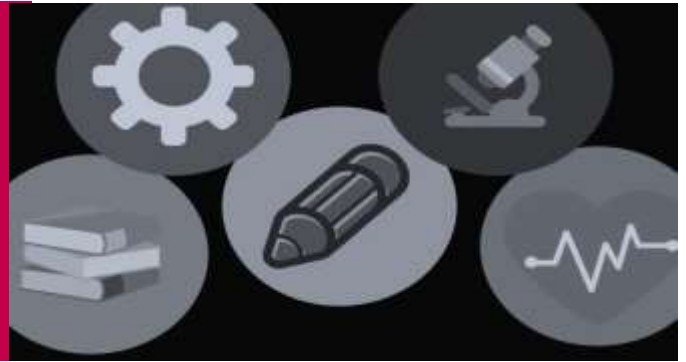
Doctoral studies are organised through doctoral programmes that set out a training plan which consists of a series of training activities, designed to acquire competences and skills, and which culminates with writing and defending a doctoral thesis



**29 Doctoral Programmes**  
Find a [doctoral programme](#) at the  
University of Valladolid



# DOCTORAL PROGRAMMES



## Health Sciences

- ⊖ DOCTORATE IN VISION SCIENCE
- ⊖ DOCTORATE IN BIOMEDICAL RESEARCH
- ⊖ DOCTORATE IN HEALTH SCIENCE RESEARCH

## Sciences

- ⊖ DOCTORATE IN PHYSICS
- ⊖ DOCTORATE IN MATHEMATICS
- ⊖ DOCTORATE IN CHEMISTRY
- ⊖ DOCTORATE IN CHEMISTRY: SYNTHESIS CHEMISTRY, CATALYSIS AND ADVANCED MATERIALS

## Social and Legal Sciences

- ⊖ DOCTORATE IN BUSINESS ECONOMICS
- ⊖ DOCTORATE IN LAW
- ⊖ DOCTORATE IN ECONOMICS
- ⊖ DOCTORATE IN TRANSDISCIPLINARY RESEARCH IN EDUCATION

## Engineering and Architecture

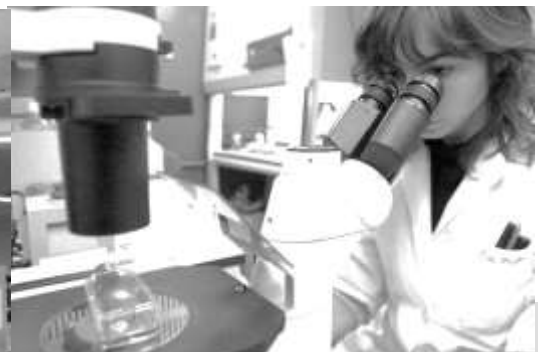
- ⊖ DOCTORATE IN ARCHITECTURE
- ⊖ DOCTORATE IN AGRICULTURAL AND BIOSYSTEMS SCIENCE AND ENGINEERING
- ⊖ DOCTORATE IN CONSERVATION AND SUSTAINABLE USE OF FOREST SYSTEMS
- ⊖ DOCTORATE IN OENOLOGY, VITICULTURE AND SUSTAINABILITY

- ⊖ DOCTORATE IN INFORMATICS
- ⊖ DOCTORATE IN INDUSTRIAL ENGINEERING
- ⊖ DOCTORATE IN CHEMICAL AND ENVIRONMENTAL ENGINEERING
- ⊖ DOCTORATE IN FLUID THERMODYNAMICS ENGINEERING
- ⊖ DOCTORATE IN INFORMATION AND TELECOMMUNICATION TECHNOLOGIES

## Humanities

- ⊖ DOCTORATE IN SPANISH: LINGUISTICS, LITERATURE AND COMMUNICATION
- ⊖ DOCTORATE IN ADVANCED ENGLISH STUDIES: LANGUAGES AND CULTURES IN CONTACT
- ⊖ DOCTORATE IN EUROPE AND THE ATLANTIC WORLD: POWER, CULTURE AND SOCIETY
- ⊖ DOCTORATE IN PHILOSOPHY
- ⊖ DOCTORATE IN LOGIC AND PHILOSOPHY OF SCIENCE
- ⊖ DOCTORATE IN MUSICOLOGY
- ⊖ DOCTORATE IN CULTURAL AND NATURAL HERITAGE. HISTORY, ART AND TERRITORY
- ⊖ DOCTORATE IN TEXTS FROM CLASSICAL ANTIQUITY AND THEIR SURVIVAL
- ⊖ DOCTORATE IN TRANSLATION STUDIES, PROFESSIONAL AND AUDIOVISUAL TRANSLATION

Doctoral studies are either three years full-time or five years part-time, commencing on the date of first enrolment in the doctoral programme until the date the doctoral thesis is officially registered.





# REQUIREMENTS

## TO ACCESS DOCTORATE STUDIES

### Entry requirements for students with qualifications obtained in higher education systems in EHEA countries

- Holding an official Spanish degree, or equivalent, and a master's degree, or equivalent, provided that at least 300 ECTS credits have been passed in the total of the two degrees.
- Holding an official degree from a Spanish university, or from another country that is a member of the European Higher Education Area, and which grants access to master's degree studies, having passed a minimum of 300 ECTS credits in official university studies, at least 60 of which must be at master's degree level.
- Holding another doctorate degree qualification.

### Entry requirements for student from outside the European Higher Education Area (EHEA)

Holding a degree obtained in accordance with foreign education systems without the need for homologation, after verification by the University of Valladolid that said degree accredits a level of training equivalent to official Spanish master's degrees and that it authorises access to doctorate studies in the country of issuance. In no instance does this verification imply homologation of the degree qualification issued to the interested party, nor is it recognised for any purpose other than for access to doctorate studies.

At the time of enrolment, the documentation must be legalised through diplomatic channels. All documents issued in a foreign language must be accompanied by an official translation into Spanish.

**Admission criteria.** Each doctoral programme's academic committee may establish additional requirements and criteria for selecting and admitting students to the programme.

Consult the [specific criteria](#) of a particular doctoral programme.





# APPLICATION FOR ADMISSION

**Admission process.** The candidate must choose one of the doctoral programmes from among the courses available at the University of Valladolid PhD school.

**Application for admission.** Candidates who wish to access a doctoral programme must apply to the academic committee of the doctoral programme for admission, within the established period.

You can apply for part-time admission. In order to be admitted as a part-time student, one of the following situations must be accredited:

- a. Engaging in a work activity for at least one semester of the upcoming academic year, accreditation of which will be provided through the enrolment document issued at the social security office or equivalent.
- b. Taking care of a relative up to second degree kinship by consanguinity or affinity.
- c. Being a high level, high performance or high-level university athlete.
- d. Being affected by a degree of physical, sensory or psychological disability, officially recognised as such by the competent authority, equal to or greater than 33% or being officially recognised as a student with special educational needs.
- e. Being in other special circumstances that the academic committee responsible for the doctoral programme deems determinant for inclusion as a part-time student.

**Decision on applications for admission.** The academic committee responsible for the doctoral programme will take a decision on applications by applying the admission criteria for each programme (set out in their verified report) and authorising enrolment of the candidates admitted. Authorisation for enrolment may require additional specific training courses to be taken in accordance with Article 7.2 of RD99 / 2011.

At that time, part-time enrolment will be authorised (if requested). A tutor and, where possible, a thesis supervisor, will be assigned.

**Application deadlines.** Applications for the doctorate programmes are accepted all year round, although there are two terms for admission and enrolment per course: one in September and one in February. For [further information](#), see



## How should I apply for admission?

Students must register and fill in the [application for admission](#)

**Administrative validation.** The ESDUVa administrative secretariat will verify that your application meets the requirements and that the attached documentation is correct. If not, we will contact you by email so that any faults we may have detected can be dealt with.



**Academic validation and decision.** If your application successfully passes the previous stage, it will be validated by the academic committee of the doctoral programme, who will then decide on your admission within the deadlines established in the calendar. Subsequently, the lists of admitted applicants will be published.

If the decision is favourable, you must **formalize your registration** within the established deadlines. Check the registration calendar for new students.

### Admission documentation

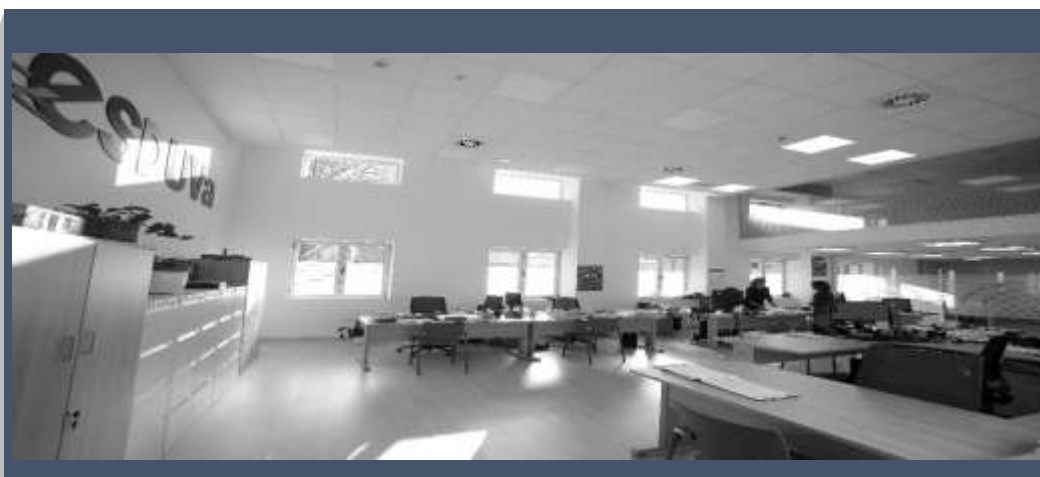
While the application for admission is being processed you must upload a copy of the following documents onto the application:

1. Official identity document (ID / Passport / NIE)
2. Documentation required specifically by the programme to which you are applying for admission.
3. Application for *part-time*\* doctorate and document proving *part-time student status*\*.
4. For applicants from the EHEA: *documentation of the qualifications obtained*\*.
5. For applicants from outside the EHEA: *application for verification*\* of studies and copies of documents from amongst the following:
  - Official foreign university degree at the level of Spanish university master's degree
  - Academic certificate of master's degree studies showing the duration, courses taken, as well as grades and number of credits or workload of each
  - Certificate issued by the university awarding the degree, certifying that these studies grant access to doctoral studies in the country issuing the degree
  - Previous degree level certificate
  - Academic certificate corresponding to the previous degree level studies, showing the duration of the studies, courses taken, as well as the grades and number of credits or workload of each.

\*Consult here the [documents required](#)

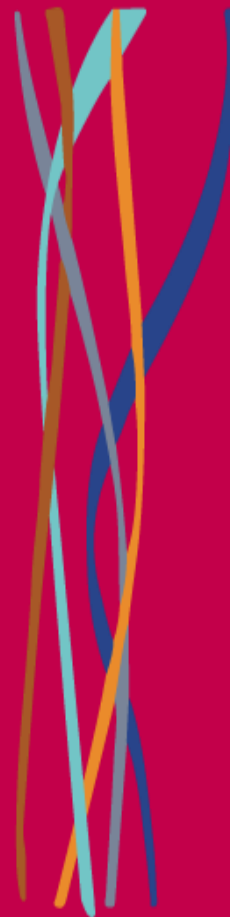
\*\*Consult here the [documents required](#)

Within 10 days of completing your self-registration, you must submit additional documentation\*\* to the administrative secretariat of the Doctoral School.



## Fees, reductions and methods of payment

Public prices for courses leading to the awarding of university degrees in public universities are established by decree of the Regional Government of Castilla y León. Consult [prices](#) here



## INTERNATIONAL WELCOME POINT (IWP)

The [IWP](#) aims to provide the best conditions for work and integration, offering personal attention before, during and after your stay. The IWP provides a comprehensive guidance service covering a range of issues that are of interest to those visiting the University of Valladolid and the city: accommodation, procedures for overseas visitors, family support, transport, schooling and/or nurseries, medical insurance, UVa card, internet access, languages, sports, parking facilities, certificates...




## Contact us

Website:  
<http://escueladoctorado.uva.es>

Email:  
[escuela.doctorado@uva.es](mailto:escuela.doctorado@uva.es)

 @EsDUVa

 Escuela de Doctorado -  
Universidad de Valladolid



**Universidad de Valladolid**